

KANOO SHIPPING NEWS

KANOO SHIPPING



كانو للملاحة

Kanoo Shipping Africa provides a range of services and port coverage to meet the ever-changing requirements of the shipping industry in Africa.

What we do:

- Dedicated Africa Management Team
- Hub Agency Services, Port Call Management throughout Africa
- Centralized and Transparent Financial Management
- Sole Point of Contact for each Customer
- Industry Leading Operational IT Systems
- 24 Hrs. Communications Management
- Research, Market Data & Analysis Capability
- Active measurement of Port Calls through KPI's
- Strong HSSE Policy
- Strict compliance & Anti-corruption standards
- BBBEE Level 1 Certified
- Trace Certified
- Bureau Veritas Certified

For launch/ OPL services : We suggest vessels call CPT/ DUR/ PE.

CPT & PE have the least amount of deviation, however, DUR can also be used depending on vessels sailing routes. CPT operates 24/7 while PE & DUR are daylight restricted, so depending on the vessels ETA, you can choose which port will suit you the best.

For bunkers: We would suggest CPT as currently it has the least amount of congestion. Durban & PE can also supply bunkers but there is often a longer waiting time for sole bunker callers. All bunkering operations take place in port, alongside the quay.

Please see below OPL maps for your reference.

For more information, please contact:

capetown@kanooshipping.com

DURBAN

RENDEZVOUS POINTS

ANCHORAGES:

No.1: 29°43'S
 OUTER 31°10'E
 No.2 30°59'S
 SBM 30°04'E



OPL REPLENISHMENT POSITION:

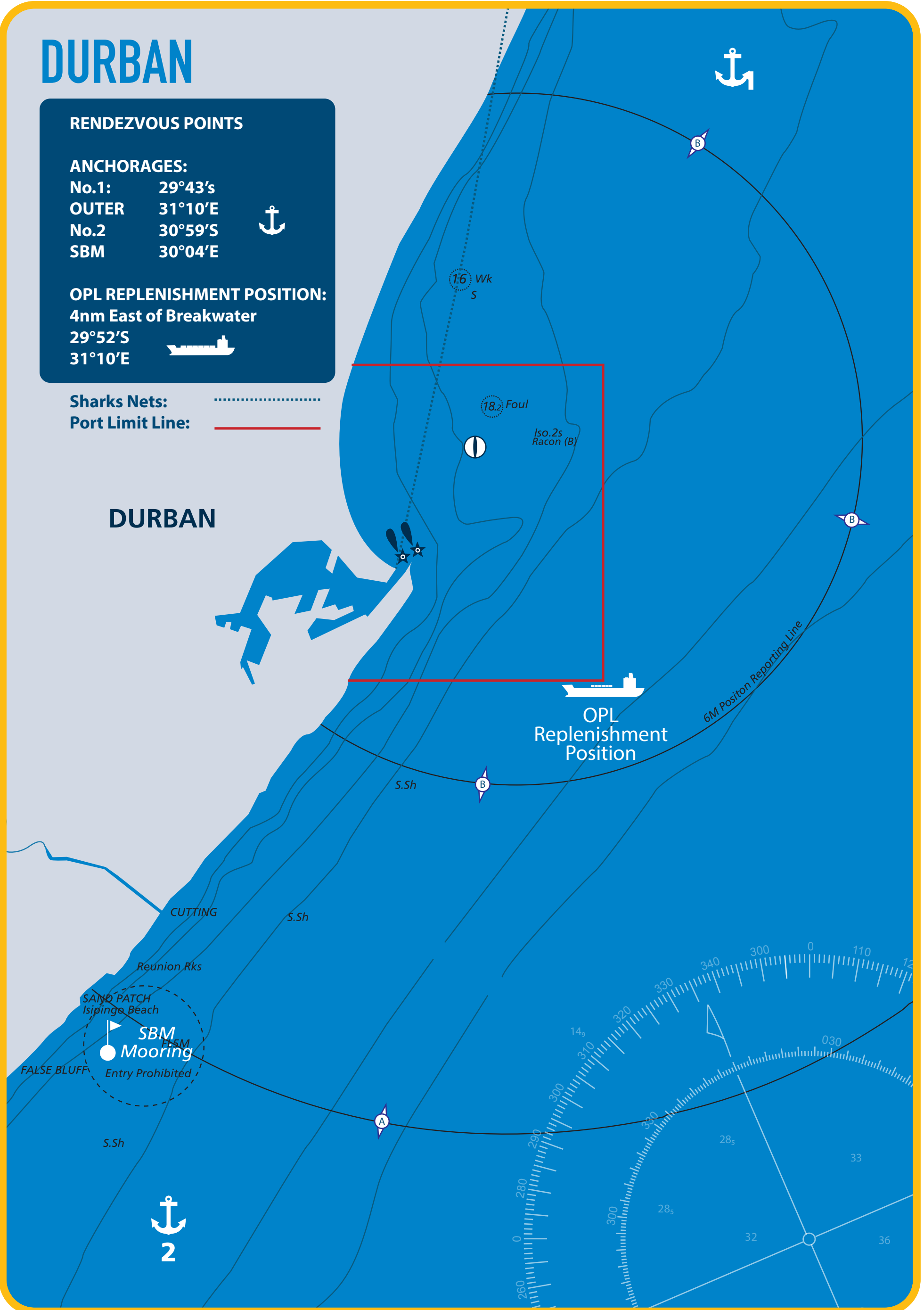
4nm East of Breakwater
 29°52'S
 31°10'E



Sharks Nets:

Port Limit Line: ———

DURBAN



PORT ELIZABETH

RENDEZVOUS POINT

ANCHORAGES:

No.1: 29°43'S
OUTER 31°10'E
No.2 30°59'S
SBM 30°04'E



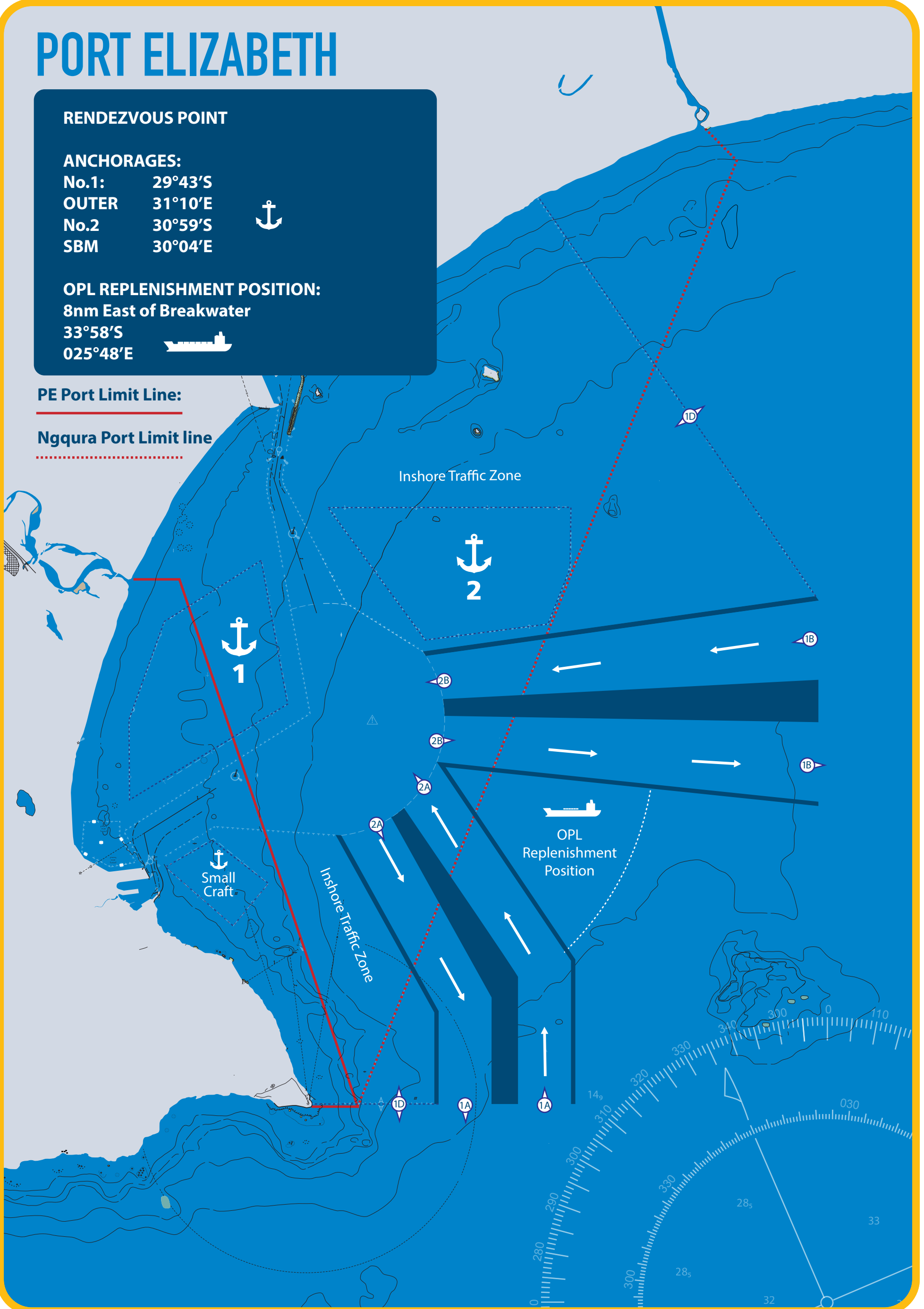
OPL REPLENISHMENT POSITION:

8nm East of Breakwater
33°58'S
025°48'E

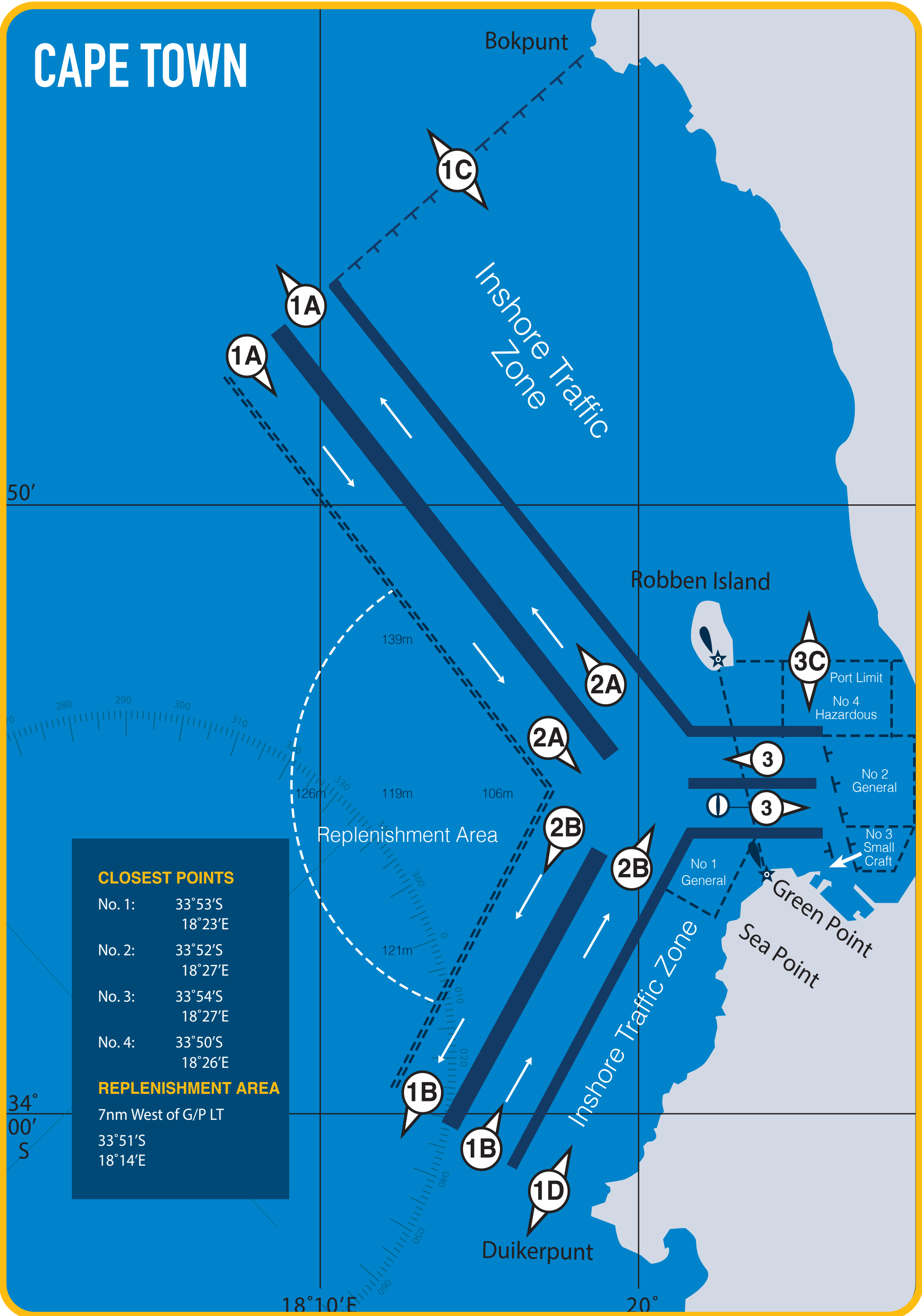


PE Port Limit Line:

Ngqura Port Limit line



CAPE TOWN



CLOSEST POINTS

No. 1:	33°53'S
	18°23'E
No. 2:	33°52'S
	18°27'E
No. 3:	33°54'S
	18°27'E
No. 4:	33°50'S
	18°26'E

REPLENISHMENT AREA

7nm West of G/P LT
 33°51'S
 18°14'E